



# The Bolton Technical Blade XL

## 5G OTR Cellular Vehicle Antenna

**BOLTON** |   
TECHNICAL

**BT684090**

### The Blade XL is a high-performing, commercial-grade, 5G-capable cellular vehicular antenna

- Quiet & Aerodynamic High-Gain Antenna for Vehicles
- Heavy-Duty & Weatherproof Construction
- 3/8 x 24 Threaded Base for Versatile Mounting Options
- Quick Disconnect Coax Cable
- Works with ALL vehicle signal boosters



#### ELECTRICAL STUFF

Product Specifications may change without prior notice.

Item No.	BT684090									
Frequency Range	MHz	600	698-806	806-960	1710-1880	1850-1990	1910-2170	2300-2700	3600-3750	
Typical Gain	dBi	-6.4	2.7	2.1	4.4	2.7	2.4	3.9	2.3	
Max Gain	dBi	4.4								
Input Impedance	Ohm	50								
Polarization Type	Vertical									
Max Power	W	15								

#### MECHANICAL STUFF

Connector Type	SMA Male/FME Female		
Antenna Length	mm, in	1105 mm, 43.5" in	
Weight	2 lbs		
Pigtail Coax Cable Length	mm, ft	38 mm, 1.5" to termination	
Quick-Connect Coax Cable Type	RG-58 (88240)	(SMA Female - FME Female Adapter)	
4M/13ft Coax Cable Extension	LMR <sup>®</sup> 200 Type	SMA Male/SMA Male	
Radome Material:	Tinned Copper/High Rigidity ABS		
Radome Color	UV Resistant Black		
Warranty Term	2 Year Manufacturers Warranty		
Assembled in the USA	Yes		



**QUESTIONS? CALL US TODAY**  
888-987-2658

✉ [sales@boltontech.com](mailto:sales@boltontech.com)  
🌐 [www.boltontech.com](http://www.boltontech.com)

📍 5010 Wright Road, Suite 115  
Stafford, TX, 77477

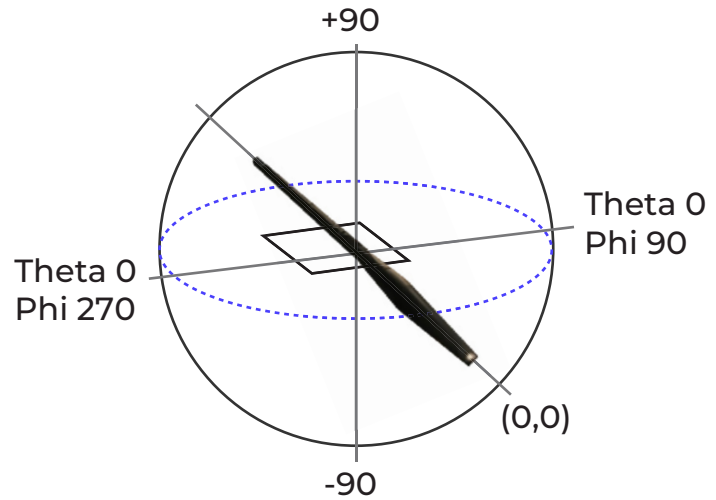


# The Bolton Technical Blade

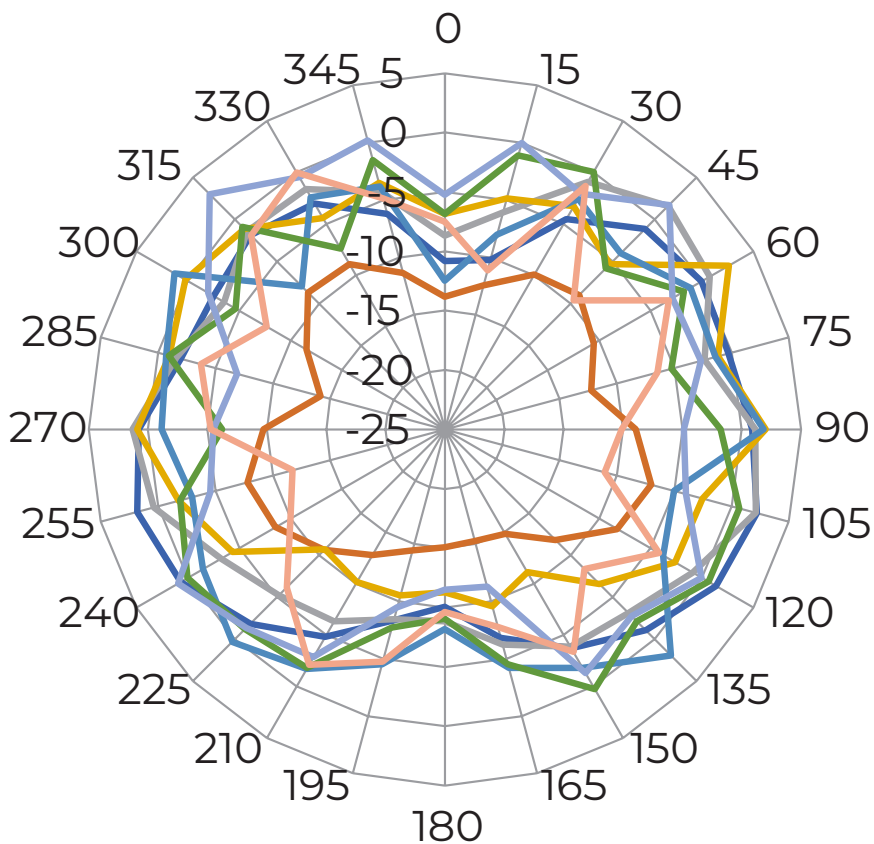
## 5G OTR Cellular Vehicle Antenna



BT684090



### RADIATION PATTERNS, 600-1700 MHz



## BLUE

- 600 MHz
- 700 MHz
- 850 MHz
- 1700 MHz
- 1900 MHz
- 2100 MHz
- 2500 MHz
- 3700 MHz



QUESTIONS? CALL US TODAY  
888-987-2658

✉ sales@boltontechnical.com  
🌐 www.boltontechnical.com

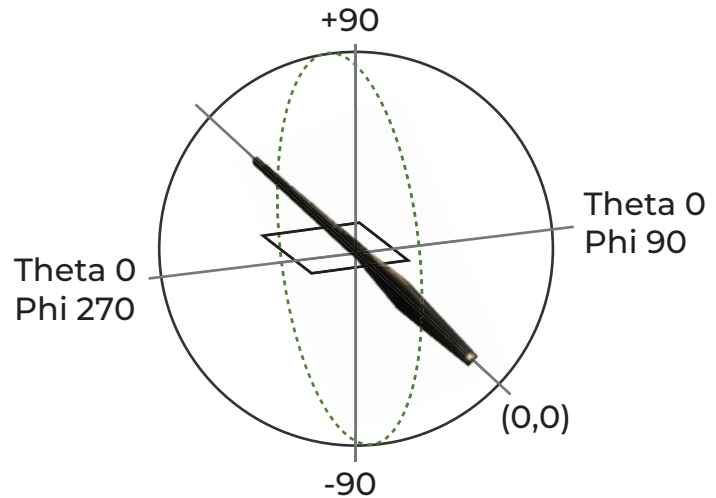
📍 5010 Wright Road, Suite 115  
Stafford, TX, 77477



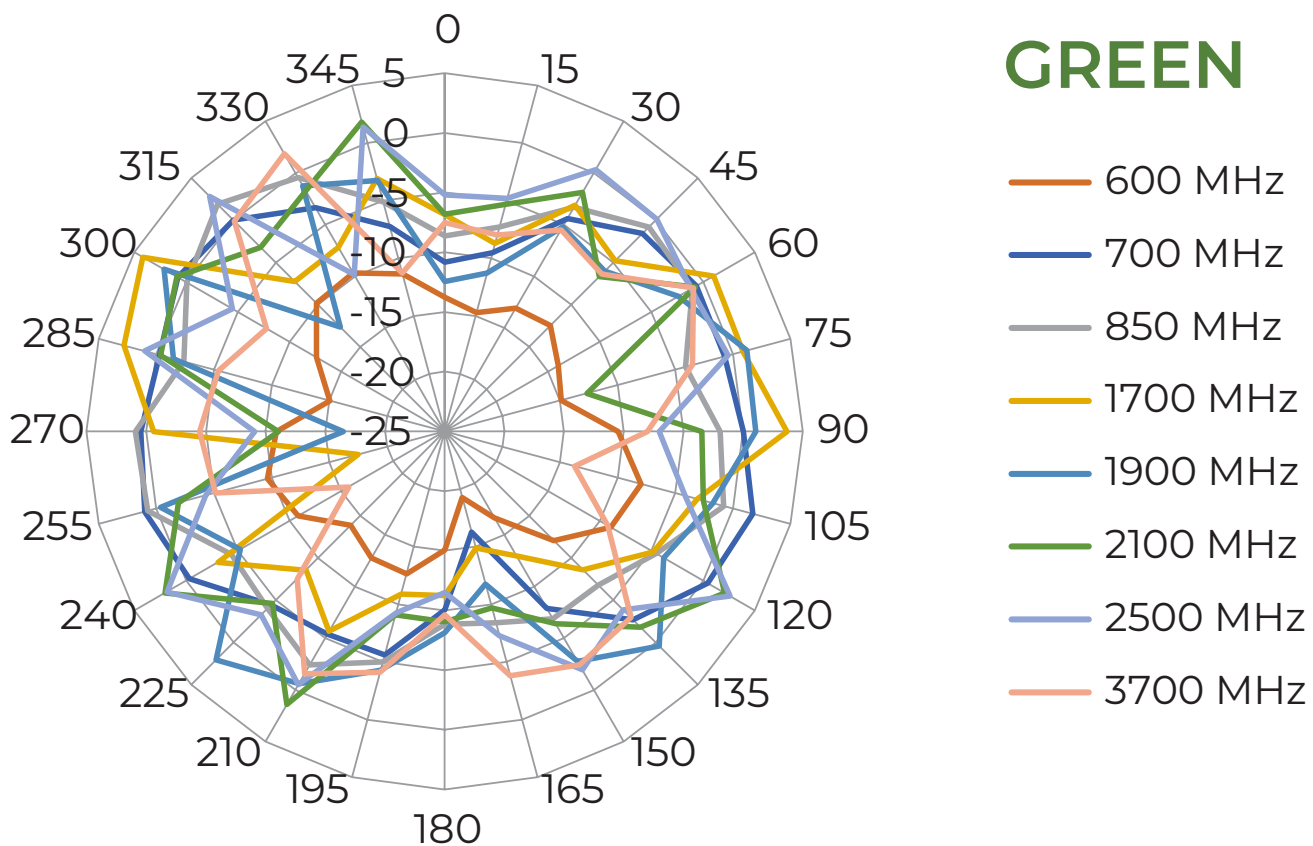
# The Bolton Technical Blade

## 5G OTR Cellular Vehicle Antenna

BT684090



### RADIATION PATTERNS, 600-1700 MHz



QUESTIONS? CALL US TODAY  
888-987-2658

✉ sales@boltontechnical.com  
🌐 www.boltontechnical.com

📍 5010 Wright Road, Suite 115  
Stafford, TX, 77477

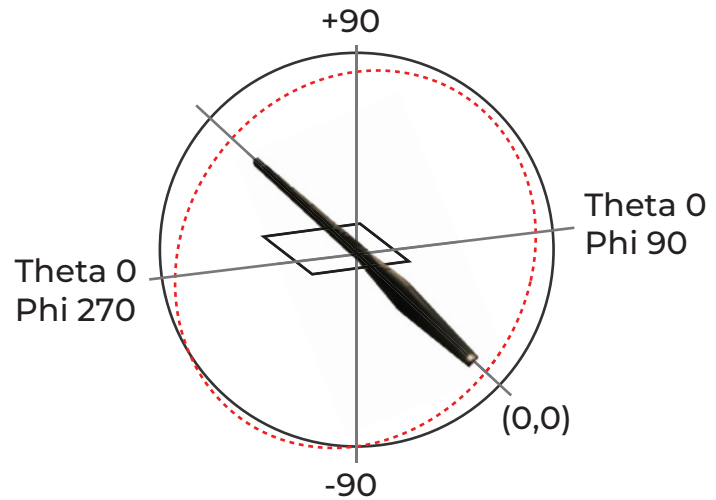


# The Bolton Technical Blade

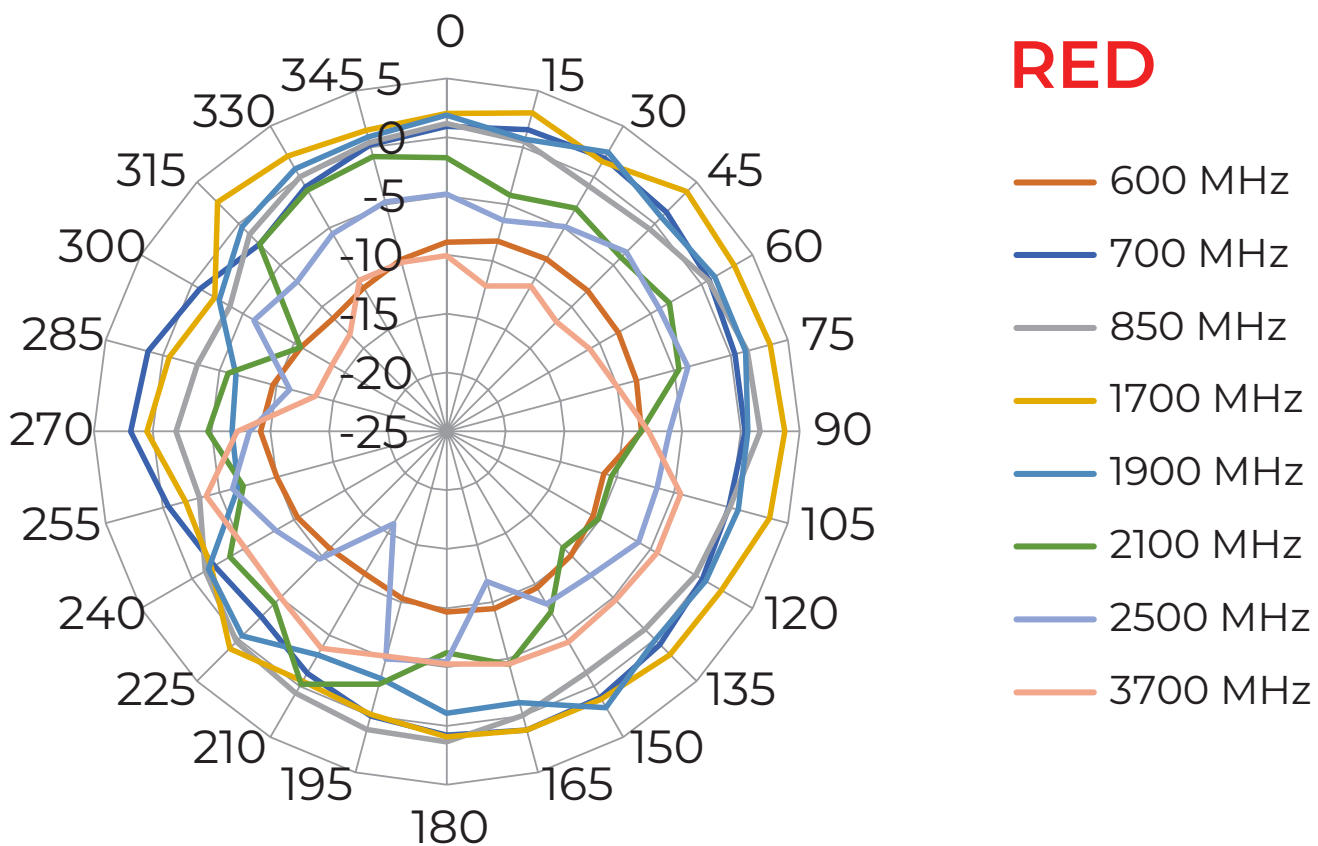
## 5G OTR Cellular Vehicle Antenna

**BOLTON**  
 TECHNICAL 

BT684090



### RADIATION PATTERNS, 600-1700 MHz



QUESTIONS? CALL US TODAY  
888-987-2658

✉ sales@boltontechnical.com  
🌐 www.boltontechnical.com

📍 5010 Wright Road, Suite 115  
Stafford, TX, 77477



# The Bolton Technical Blade

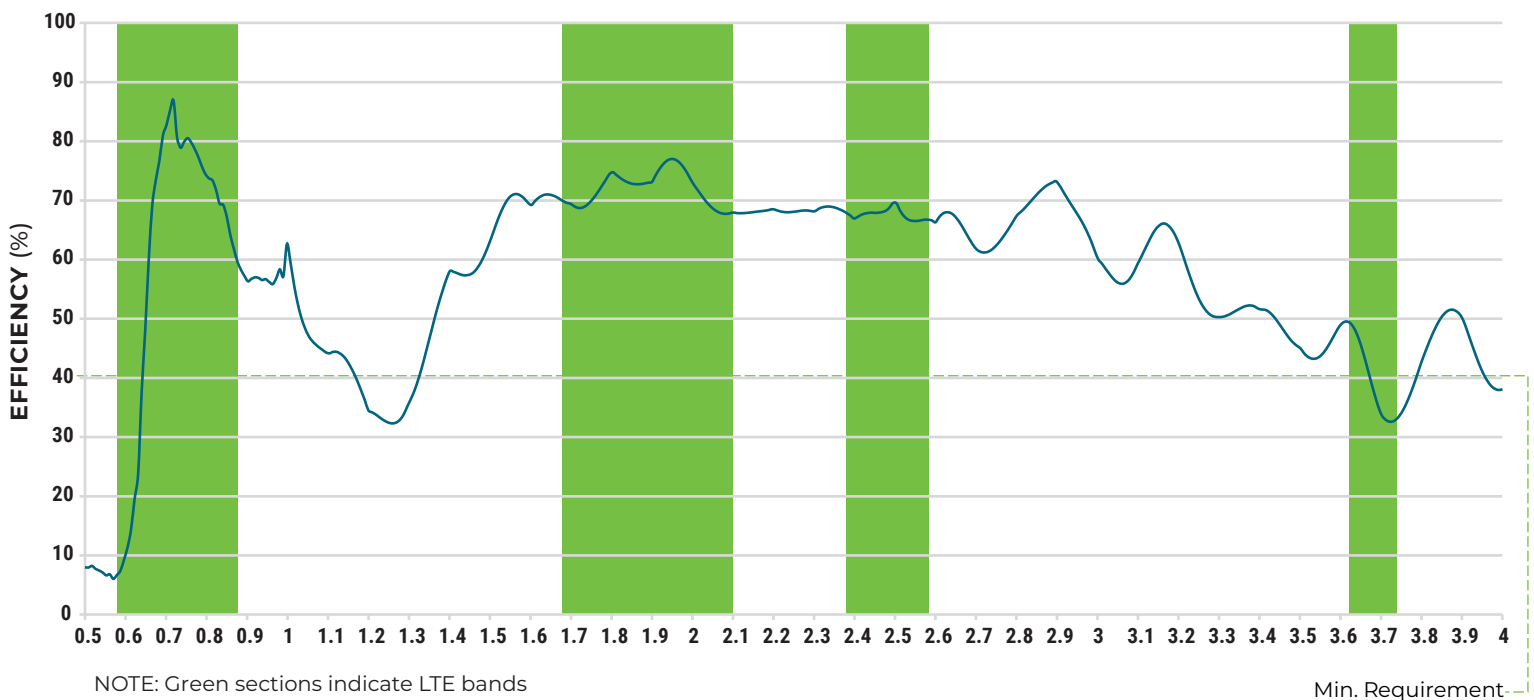
## 5G OTR Cellular Vehicle Antenna

**BOLTON**  
 TECHNICAL 

**BT684090**
**FREQUENCY (GHz)**

Product Specifications may change without prior notice.

Frequency MHz	600	700	850	1700	1900	2100	2500	3700
Efficiency	9.2%	82.7%	67.3%	69.5%	73.1%	68.0%	69.5%	33.6%



**QUESTIONS? CALL US TODAY**  
 888-987-2658

✉ [sales@boltontechnical.com](mailto:sales@boltontechnical.com)  
 🌐 [www.boltontechnical.com](http://www.boltontechnical.com)

📍 5010 Wright Road, Suite 115  
 Stafford, TX, 77477



# The Bolton Technical Blade

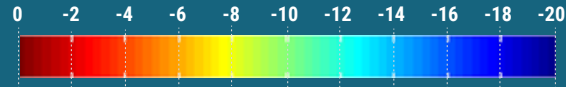
## 5G OTR Cellular Vehicle Antenna

**BOLTON** |   
TECHNICAL

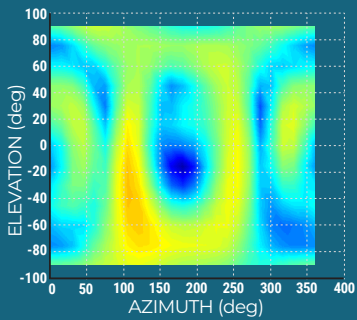
**BT684090**

### HEAT MAP & 3D SPHERICAL

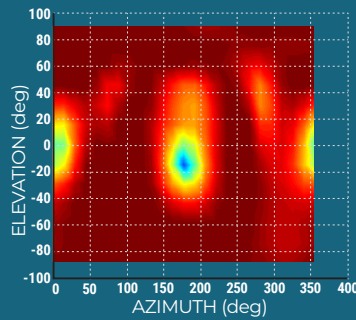
Product Specifications may change without prior notice.



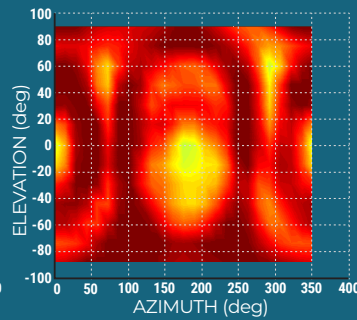
**600 MHz**



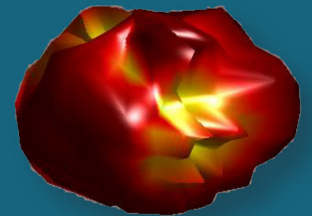
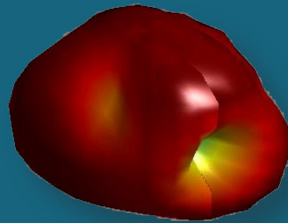
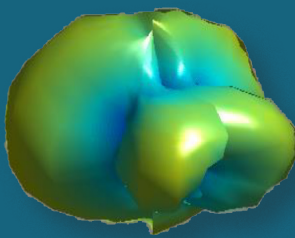
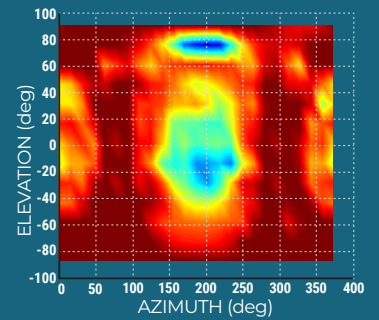
**700 MHz**



**850 MHz**



**1.7 GHz**



QUESTIONS? CALL US TODAY  
888-987-2658



sales@boltontechnical.com



www.boltontechnical.com



5010 Wright Road, Suite 115  
Stafford, TX, 77477



# The Bolton Technical Blade

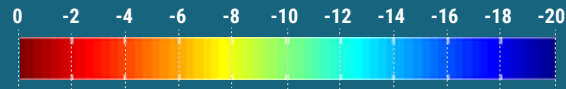
## 5G OTR Cellular Vehicle Antenna

**BOLTON** |   
TECHNICAL

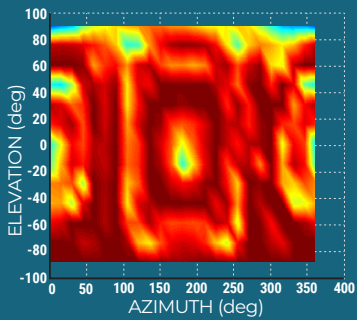
 BT684090

### HEAT MAP & 3D SPHERICAL

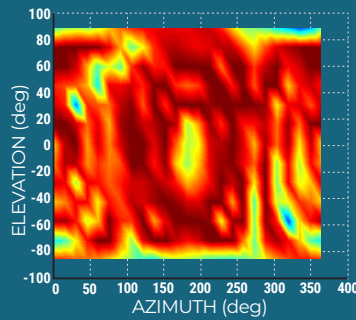
Product Specifications may change without prior notice.



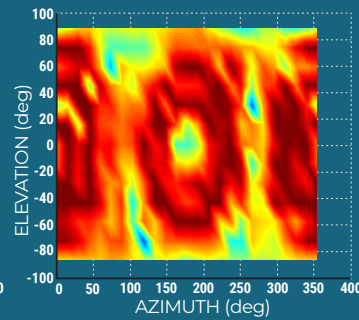
**1.9 GHz**



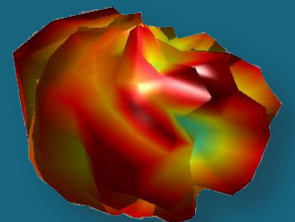
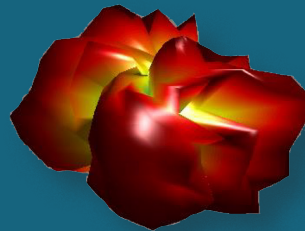
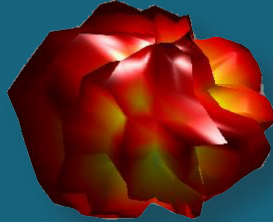
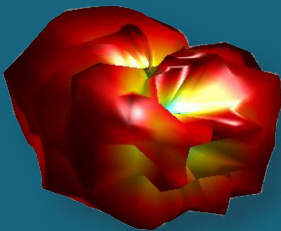
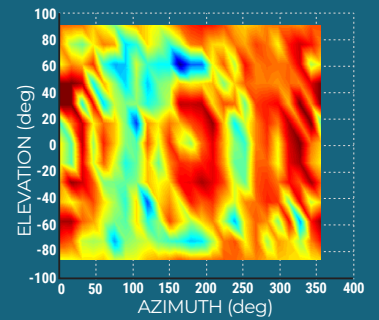
**2.1 GHz**



**2.5 GHz**



**3.7 GHz**



QUESTIONS? CALL US TODAY  
888-987-2658



sales@boltontechnical.com



www.boltontechnical.com



5010 Wright Road, Suite 115  
Stafford, TX, 77477

